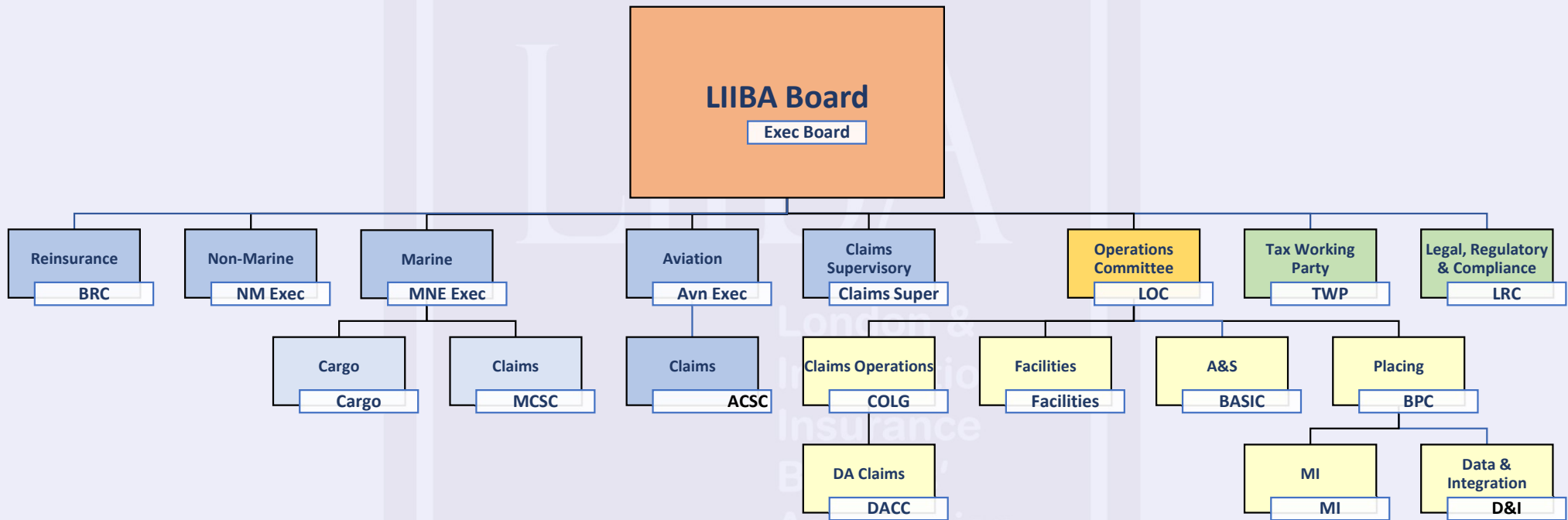


# LIIBA Committees



# LIIBA Board



Exec Board		
Andy Bragoli (Howden Insurance Brokers Ltd) - <b>CHAIR</b>		
Alastair Swift (Willis Towers Watson) - <b>Deputy Chair</b>		
Dominic Samengo-Turner (Marsh Ltd) – <b>Deputy Chair</b>	Shaun Barrington (United Insurance Brokers Ltd)	Paul Jack (Lockton Companies LLP)
Holly Shepherd (Shepherd Compello Ltd) – <b>Deputy Chair</b>	Charles Berry (Berry Palmer & Lyle Ltd)	James Masterton (Ardonagh Specialty)
Tracy-Lee Kus (Aon Ltd) – <b>Deputy Chair</b>	Ian Gormley (Howden Insurance Brokers Ltd)	Mark Cody (AmWins Global Risks)
Christopher Croft (LIIBA) – Chief Executive	James Hands (Miller Insurance Services LLP)	Gina Butterworth (Gallagher Re)
	Jason Collins (Tysers)	Gordon Longley (McGill and Partners)
	Martin Emkes (Arthur J Gallagher Ltd)	Margarita Hutley (Iris Insurance Brokers Ltd)

Return To  
Structure



# Executive Committees

BRC (Brokers Reinsurance Committee)		
James Vickers (Gallagher Re) – <b>CHAIR</b>		
Christopher Croft (LIIBA) – Chief Executive		
Rocky De Lucia (Price Forbes & Partners Ltd)	Roger Mount (Alwen Hough Johnson)	Andy Gibbs (Alwen Hough Johnson Ltd)
Ed Fenton (Guy Carpenter)	Jenan Nakeeb (Arthur J Gallagher)	
Angus Millgate (McGill and Partners)	Peter Talbot (Tysers)	

[Return To Structure](#)



# Executive Committees

Non-Marine Executive Committee		
Toby Colls (AmWin Global Risks) - <b>CHAIR</b>		
<b>Chris Croft (LIIBA)</b>		
Louise Gladding (Miller Insurance Services LLP)	Frank Hudson (Guy Carpenter)	Mark Hubbard (Arthur J Gallagher Ltd)
Suzi Morgan (BMS Group)	Jonathan Monk (James Hallam Ltd)	Gemma Field (Arthur J Gallagher Ltd)
Patrick Dromgoole (Marsh Ltd)	Greg Snelling (Lonmar Global Risks Ltd)	Tim Stokes (Tysers)
Jon Sale (WTW)		

[Return To Structure](#)



# Executive Committees

Marine Executive Committee		
Louise Nevill (Marsh Ltd) – <b>CHAIR</b>		
<b>Chris Croft (LIIBA)</b>		
Amy Simmons (LIIBA)		
	Andrew James (Arthur J Gallagher Ltd)	Thomas Wilson (Tysers)
Andrew Challacombe (Miller Insurance Services LLP)	Melis Otmar (Howden Limited)	Mike Fountaine (Channing Lucas & Partners Ltd)
Andrew Watson (Marsh Ltd)	Heather Clarkson (Aon Ltd)	Andrew Gordon (Miller Insurance Services Ltd)

[Return To Structure](#)



# Executive Committees

Aviation Executive Committee		
Bill Smith (Arthur J Gallagher) – <b>CHAIR</b>		
<b>Chris Croft (LIIBA)</b>		
John Rooley (Willis Towers Watson)	Chris Hurdle (Aon Ltd)	David Sales (Price Forbes & Partners Ltd)
Jared Seth (Willis Towers Watson)	Claire Vincent (Arthur J Gallagher)	Danny Hubbard (Howden Insurance Brokers Limited)
David George (Marsh Ltd)	Jeremy Kinsey (McGill & Partners)	
Nicholas Redgrove (Ed Broking LLP)	Nigel Weyman (Arthur J Gallagher (UK) Ltd)	

Return To  
Structure

# Executive Committees

Claims Supervisory Committee		
Miles Banks (Willis Towers Watson) - <b>CHAIR</b>	Nick Coles (R K Harrison Insurance Brokers Ltd)	Alex Reynolds (Marsh Ltd)
	Mike Constanti (Arthur J Gallagher Ltd)	Mehmet Shukri (Aon Benfield Ltd)
Jackie Hobbs (LIIBA)	Andrew Ford (Miller Insurance Services LLP)	Martin Thomas (Aon Ltd)
Christopher Croft (LIIBA)	Frank Hudson (Guy Carpenter)	Paul Travers (Aon Ltd)
	Shaun Orton (Arthur J Gallagher Ltd)	Nick Coles (Howden Insurance Brokers Limited)
Gareth Boyce (Arthur J Gallagher Ltd)	Melis Otmar (Howden Insurance Brokers Limited)	Cassie Lazarus (Ardonagh)
Steven Clark (Aon Benfield Ltd)	Noona Barlow (McGill and Partners)	Anthony Foley (Price Forbes & Partners Ltd)

# Operations Committees

LOC		
Kate Roy (Willis Towers Watson) – <b>Chair</b>	Gordon Bathurst (Miller)	Sophia Lane (LIIBA)
James Livett (LIIBA) - <b>Secretary</b>	Adam Stafford (BMS)	Sarah Walton (Howden Insurance Brokers Limited)
Stuart Blakeborough (Tysers)	Nick Williams-Walker (AJG)	
Simon Coleman (Lockton)	Alistair Barrett (RKH)	
Steve McGuckin (AmWin)	Aileen Croft (Marsh)	
John Muir (Willis Towers Watson)	Christopher Croft (LIIBA)	
Matt Unsworth (Aon)	Jackie Hobbs (LIIBA)	



# Tax & Reg Committees

Tax Working Party		
Ruwan de Silva (Aon Ltd) - <b>CHAIR</b>		
Jackie Girow (LIIBA) - Secretary	Chelsie Mowling (Consilium)	Max Peacock (Marsh)
Christopher Croft (LIIBA)	Steve Perry (Howden)	Brian Brady (Lockton)
Craig Rapson (Aon Ltd)	Anne Marie Roberts (Arthur J Gallagher Ltd)	Narved Patel (Ardonagh)
Paul Bainbridge (Lockton Companies LLP)	Praveen Sharma (Marsh Ltd)	Kim Hau (Ardonagh)
Bandana Kaur (Lockton Companies LLP)	Jonathan Rand (Willis Towers Watson)	James Chapman (Willis Towers Watson)
Alex Stewart (Howden)	Niro Ganapathy (Willis Towers Watson)	Sandy Smith (Arthur J Gallagher Ltd)

# Tax & Reg Committees

Large Broker Expert Group (LEG)		
Chris Croft (LIIBA)		
Suzanne Pearce (Aon Ltd)	Andrew Hall (Howden)	Claire Turner (Willis Towers Watson)
Denis Vangelatos (Aon Ltd)	Clare James (Marsh Ltd)	Owen Davies (Howden)
David Cousins (Arthur J Gallagher Ltd)	Dan Patel (Willis Towers Watson)	Louise Hughes (Arthur J Gallagher)
David Grantham (Arthur J Gallagher Ltd)	Neil Kerr (Willis Towers Watson)	Joe Miles (Marsh Ltd)
Rachelle Fatani (Aon Ltd)		

# Tax & Reg Committees

Compliance Officers Group (COG)		
Chris Croft (LIIBA)	Andrew McMahon (UIB)	David Pexton (Lonmar Global Risks Ltd)
Dan Pelgrom (Crispin Speers)	Matthew Davies (Oxford Insurance Brokers Ltd)	Neil Isherwood (Bishopsgate Insurance Brokers Ltd)
David Cousins (AJG)	Matthew Graham (Berry Palmer & Lyle Ltd)	Neil Kerr (Willis Towers Watson)
Rollin Barton (Alwen Hough Johnson)	Owen Davies (Howden Insurance Brokers Ltd)	Lisa Siggery (Jensten London Markets Limited)
Pauline Doyle (Price Forbes & Partners Ltd)	Hannah Pring (Lockton Companies LLP)	Jay Singh (Acrisure Re)
Graham Gibbs (Paragon International Insurance Brokers Ltd)	Kiernan Murphy (AmWin Global Risks)	John Teager (BMS Group)
Jonathan Fussell (Miller Insurance Services LLP)	Katherine Cross (Tysers)	Emma Davies (Tysers)

# Executive Sub-Committees

Marine Cargo Sub-Committee		
Andrew Watson (Marsh Ltd) - <b>CHAIR</b>		
<b>Chris Croft (LIIBA)</b>		
Amy Simmons (LIIBA)		
Stephen Andre (Miller Insurance Services Ltd)	Peter Roberts (Howden Insurance Brokers Limited)	Philip Norwood (Willis Towers Watson)
Richard King (Lockton Companies LLP)	Mark Willoughby (Aon Ltd)	Kathleen Paul (McGill and Partners)
Matthew Skedge (Evolin Broking Limited)	Christian Daly (Marsh Ltd)	

[Return To Structure](#)

# Executive Sub-Committees

Marine Claims Sub-Committee		
Melis Otmar (Howden Insurance Brokers Ltd) - <b>Chairperson</b>		
<b>Chris Croft (LIIBA)</b>		
Amy Simmons (LIIBA)		
Joe Balls (OMNYY LLP)	Terry Humphreys (Lochain Patrick Insurance Brokers Ltd)	James Wright (Miller Insurance Services LLP)
Chris Sydenham (Tysers)	Sean Hussey (Tysers)	Philip Clark (Price Forbes & Partners Ltd)
Chris English (Howden Insurance Brokers Ltd)	Matthew McCabe (Arthur J Gallagher Ltd)	Matthew Smith (Marsh Ltd)
Richard Gospage (Gallagher Specialty)	Phillip Mace (Aon Ltd)	Alexander Greene (Seascope)

# Executive Sub-Committees

Aviation Claims Sub-Committee		
David Sales (Price Forbes & Partners Ltd) – <b>CHAIR</b>		
<b>Chris Croft (LIIBA)</b>		
Roger Bowes (Marsh Ltd)	Shaun Orton (Arthur J Gallagher Ltd)	Steve Wilkinson (Arthur J Gallagher Ltd)
Mark Butler (Arthur J Gallagher Ltd)	John Titt (Lockton Companies LLP)	Chris Brown (Price Forbes & Partners Ltd)
Philip Clayton (Willis Towers Watson)	Paul Travers (Aon Ltd)	Steve Crook (Howden Specialty)
Scott Lyrick (Willis Towers Watson)		

# Operations Committees – Sub Committees

COLG (Claims Operations Leadership Group)		
Sharyn Butcher (Howden) – <b>CHAIR</b>		Lance Grant (Newpoint Brokers Ltd)
Philip Clark (Price Forbes) – <b>Deputy CHAIR</b>	Neil Odell (McGill & Partners)	Chris Scrivener (Lockton)
Jacqueline Girow (LIIBA) - <b>Secretary</b>	Mona Barnes (Aon Ltd)	Julie Hoddy WTW)
Richard Adams (United Insurance Brokers)	Oliver Spooner (BMS Ltd)	Dawn Simpson (Guy Carpenter)
Terry Calthorpe (Gallagher Re)	Iain Lebbell (AmWins)	Melis Otmar (Howden Ltd)
Richard Robinson (Price Forbes)	Shelly Notaro (Marsh Ltd)	Stephen Huckstepp (AJG)
David Ambridge (Acrisure Re)	Jason Sidgwick (Miller)	Sophia Lane (LIIBA)

# Operations Committees

Facilities		
Sarah Peppiatt (Alesco Insurance Brokers) - <b>CHAIR</b>	Garry Murphy (AHJ)	Geoff Davies (Miller)
Jackie Hobbs (LIIBA) - <b>Secretary</b>	Calum Gosney (Bowood)	Greg Zucker (Price Forbes)
	Sophie Hodgson (Ed Broking)	David Belsham (RFIB (Tysers))
Gareth Williams (Ambris)	Lorraine Wood (Harman Kemp NA)	Mike Donovan (Shepherd Compello)
Kerry Howgate (Amwins Global Risks)	Rob Lane (Iris)	Jed Sims (Tysers)
Simon Archer (Aon)	Craig McCann (Marsh)	Colin Germany (WTW)
Graham Lindus (Bell & Clements)	Laura Lindsey (McGill)	Sophia Lane (LIIBA)
Joe Bonaccorso (Howden)	Andrew Jaggs (Lockton)	Paul Heasman (Ascrisure)



# Operations Committees

BASIC		
Simon Coleman (Lockton - <b>Chair</b> )	Kerry Daynes (UIB)	Sophia Lane (LIIBA)
James Livett (LIIBA) - <b>Secretary</b>	Steve Hackling (Ed. Broking)	
Beverley Butler (Aon)	Hazel Hercules (Price Forbes)	
Terry Calthorpe (Guy Carpenter)	Eamonn McLaughlin (Howden)	
Debbie Cochrane (Lockton Re)	Robert Ridge (Aon Re)	
Mark Coultrip (AJG)	Andy Sherman (Willis Towers Watson)	
Simon Cross (Marsh)	Jean Tait (DXC)	

# Operations Committees

BPC (Broker Placing Committee)		
Stuart Blyth (Marsh Ltd) - <b>CHAIR</b>	Glenn O'Leary (Marsh Ltd)	John Muir (Willis Towers Watson)
Jackie Hobbs (LIIBA) - <b>Secretary</b>	Lucy Elcox (RFIB Ltd)	Keeley Dunne (RFIB Group Ltd)
	Richard Clifford (Miller Insurance Services LLP)	Lesley Cole (Hyperion)
Steve Williams (Marsh Ltd)	Sandra Southwell (Howden Insurance Brokers)	Lewis Gibbons (Aon Ltd)
Chris Brighten (Aon Ltd)	Steve Hackling (Ed Broking LLP)	Martin Steele (Howden Insurance Brokers Ltd)
Chris Hughes (Arthur J Gallagher Ltd)	Steve Harrison (BMS Group)	Simon Coleman (Lockton Companies LLP)
Dave Salvage (Aon Ltd)	Harpal Kothari (Aon Ltd)	Kerry Danes (UIB)
James Livett (LIIBA)	Sophia Lane (LIIBA)	

# Operations Committees

DAC		
Stuart Blyth (Marsh) - <b>Chair</b>	Sandra Southwell (Howden)	
James Livett (LIIBA) - <b>Secretary</b>	Steve Hacking (Ed. Broking)	
John Muir (Willis Towers Watson)	Steve Harrison (BMS)	
Chris Brighton/David Salvage (Aon Re)	Eddie Tait (ACORD)	
Gary O'Leary (Marsh)	Lesley Cole/Kirsten Leslie (RKH)	
Keeley Dunne (RFIB)	Chris Hughes (AJG)	
Richard Clifford (Miller)		

# Operations Committees

MI (Management Information) Sub-Group		
Jackie Hobbs (LIIBA) - <b>Secretary</b>	Sandra Southwell (Howden Insurance Brokers Limited)	Man Cheung (Howden Insurance Brokers Limited)
Kif Guin (Marsh Ltd)	M Hack (Beach & Associates Ltd)	Anna Sampson (Omnyy LLP)
Darren David (Marsh Ltd)	Stephen Pegg (Bell & Clements Ltd)	Chris Wheeler (Lockton Companies LLP)
Neil Wiltshire (AJG)	Chris Beard (Howden Insurance Brokers Limited)	James Livett (LIIBA)
Daniel Marsh (Aon Ltd)	C Beard (Hyperion X)	Sophia Lane (LIIBA)
Simon Archer (Aon Ltd)	Nigel Roxby (Marsh Ltd)	Brian MacInnes (Aon Ltd)
David Salvage (Aon Ltd)	Steve Williams (Marsh Ltd)	

# Operations Committees

D&I (Data & Integration)		
Steve Williams (March) - <b>Chair</b>	Maria Russell (Howden Insurance Brokers Limited)	Jackie Hobbs (LIIBA)
James Livett (LIIBA) - <b>Secretary</b>	Brian Freeman (Tysers)	Sophia Lane (LIIBA)
	Lesley Cole (Howden Insurance Brokers Limited)	
Andy Woolterton/Mark Emberson/Scott Marsh/Johnathan Evans - (Willis Towers Watson)	Nigel Roxby (Marsh)	
Charles Buchanan (Aon)	Richard Clifford/Steve O'Reilly (Miller)	
Chris Brighten/David Salvage (Aon Re)	Eddie Tait (ACORD)	
Chris Beard (Howden Insurance Brokers Limited)	Tony Moore (PPL)	